



Instructions

M.A.S.S. DRAWERS, SLIDERS, FLIP-N-SLIDE, ETC.

First off, thank you for purchasing your M.A.S.S. system from AAL. We greatly appreciate your trust in our company with such a large purchase. We take that purchase and your commitment to us very seriously. If you have any questions along the way, please don't hesitate to give us a ring at 385.202.4188.

Please read the instructions thoroughly before starting this project. These instructions apply to the installation of all of our M.A.S.S. Accessories, however, the particular appearance of the mounting flanges may vary.

Tools Required:

There is more than one tool for every job, but below is the list of tools we use for this installation.

- M2.5 allen wrench (see HD Connector Instructions)
- M5 allen wrench
- M4 allen wrench
- 1/4" Ratchet

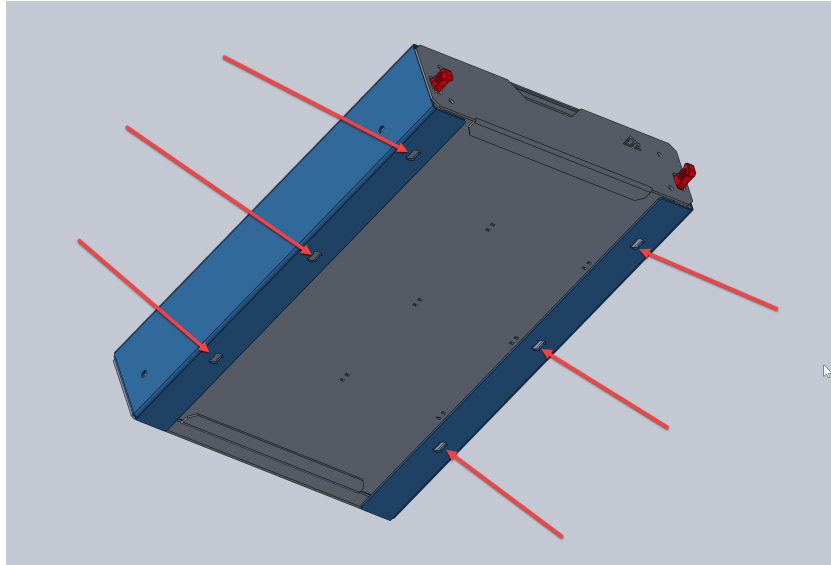
The magic of our system is the connector. Once the connectors are installed, your accessories will simply install on the top of the platform, without requiring you to reach underneath the platform to hold a nut. Here's how that goes.

NOTE - Prior to installing your M.A.S.S. accessories, you will need to install the M.A.S.S. platform for your application. Please refer to those instructions that came with that product for that installation process.

Step 1: Locate Connector Holes

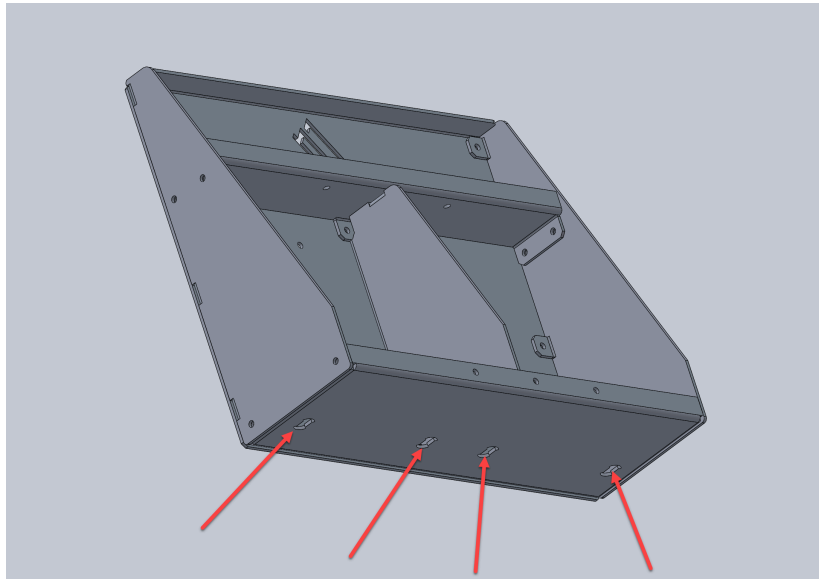
In each accessory, you'll notice several cutouts in the mounting surface. For the drawers and sliders, the mounting surface is the bottom of the outermost slide brackets. For the Flip-N-Slides, the mounting surface will be off a flange on the inside of the outermost set of slides. *See diagram 1 for an example.*

Diagram 1



For the Back Seat Shelf, we typically only use the outer two locations. If you wish to carry heavier cargo, you can use the additional two for extra security. We haven't seen those needed, but we put them in there just in case. Additional connectors are sold separately. See *diagram 2*.

Diagram 2



Now that you are familiar with the connector orientation, you can then install the connectors.

Step 2 - Identify the Installation Location

Since the MASS system is modular by design, each accessory can be installed in multiple configurations. The first step in installing is to locate where your accessory will be installed. Once you have the accessory aligned with corresponding connector cutouts in the platform (or drawer, or slider, etc.), identify the cutout holes in the platform that will need connectors installed into them. This can be done with a marker or a small piece of tape. Identifying them now will make installing the connectors easier.

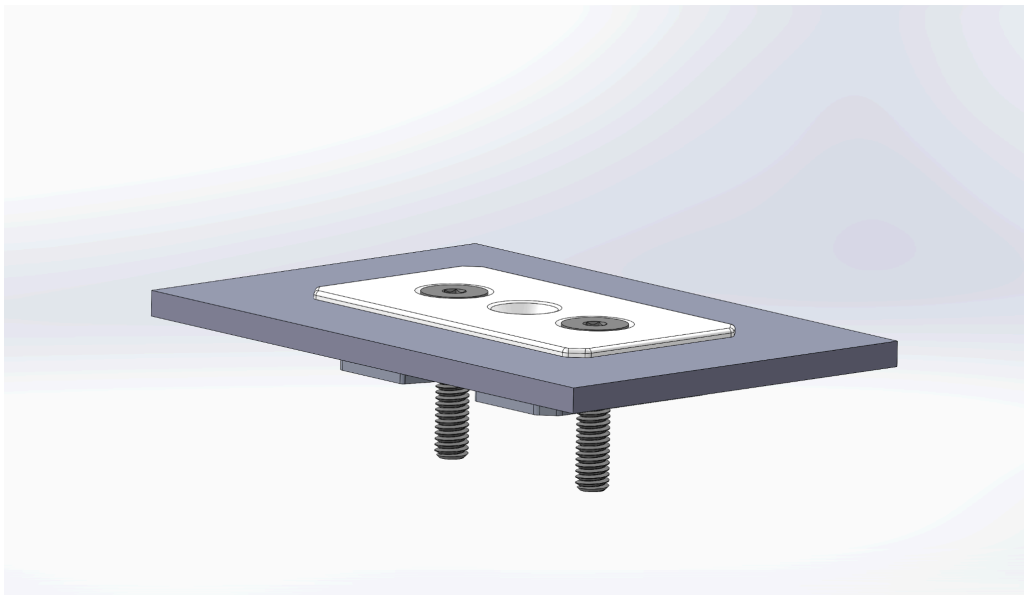
IMPORTANT: We recommend installing a connector at each far corner of each accessory. Four connectors are required per accessory (excluding Back Seat Shelves).

Step 3: Install Connectors

If you are installing any accessory, other than the Back Seat Shelf, please refer to the **HD Connector installation instructions** that shipped with your product. They will guide you through the specific process of installing the connectors.

Install a connector at each of the positions you identified in the previous step. The installed connector should look like this. (Diagram 3)

Diagram 3



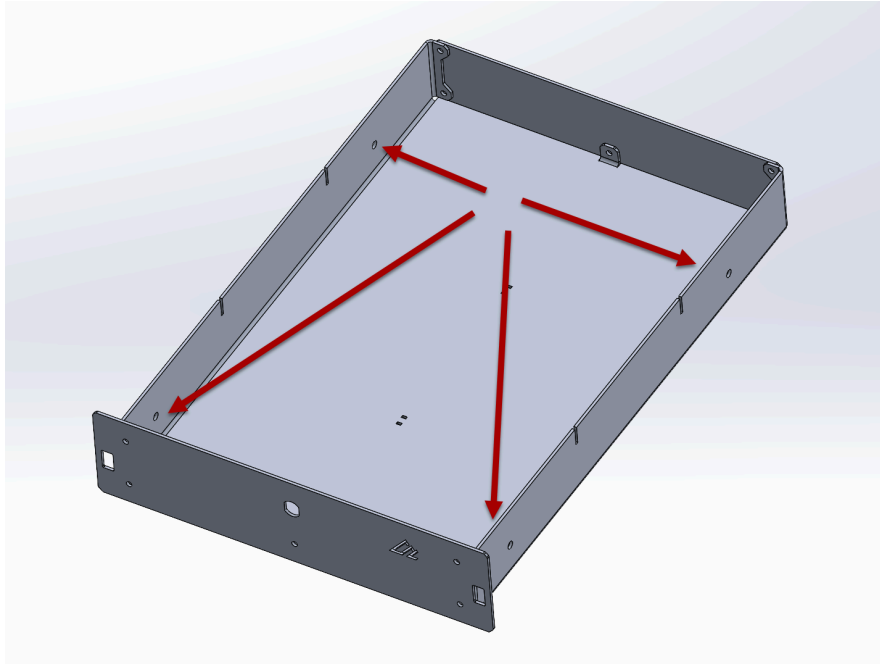
Step 4 - Install Accessory

After all of your connectors have been installed you can now attach your accessories. Lay the accessory on top of the mounting surface and align the connector holes.

If installing Drawers: Remove the drawer tray (the part that slides) to get easy access to the installation bolts. The drawer trays are held in by four bolts that can be accessed from inside the

drawer tray. Use a 5mm allen wrench to remove the bolts that hold in the tray. The bolt locations are identified in diagram 4.

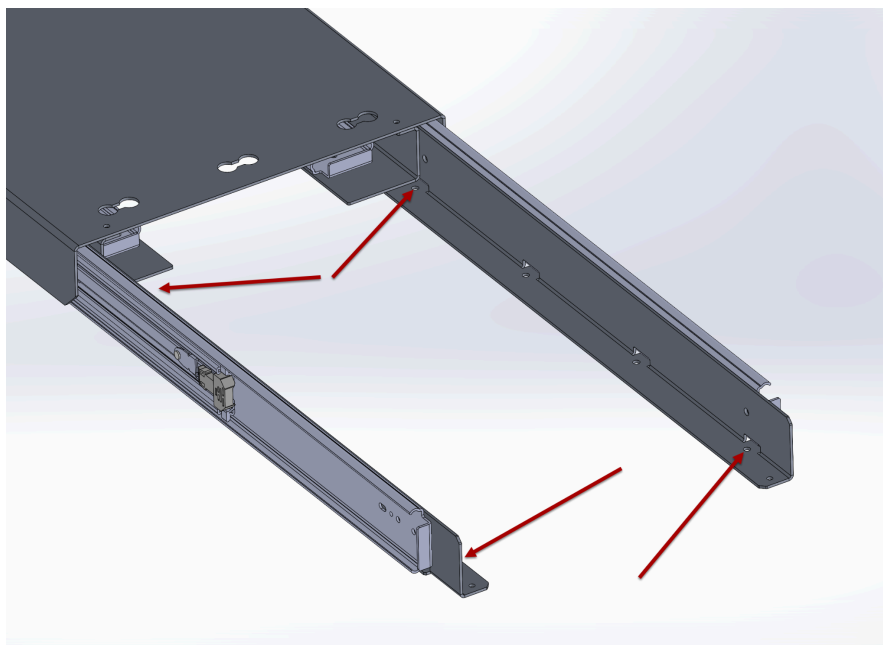
Diagram 4



Once those four bolts have been removed, you can slide the tray out and push the sliders back in to get easy access to the installation bolt locations.

If installing a slider or Flip-N-Slide: You can simply extend the tray and access the mounting locations on the attachment rails that way, but you will need someone or something to hold the extended end of the slider while you install the mounting bolts. Mounting locations shown in diagram 5 for reference.

Diagram 5



Next, install the M6 Button Head Flange bolts into each of the connectors going through the hole in the accessory. **Do not tighten the bolts yet.**

After you have started all of the mounting bolts, then, you can tighten them.

After you have tightened all of the bolts, reinstall your drawer tray (if applicable) and slide your drawer or slider into its final position, and you're done with this accessory. You can now move onto the next one. Follow the same steps when stacking accessories.

Step 3: Share Your Photos

We take great pride in building our products and we hope that pride extends to you after installing them. If you are able to share your photos online (Facebook and Instagram), please tag **@AmericanAdventureLab** in the photo. We would love to see how it turned out and give you some reciprocal attention in return.

Congrats! You're all done!

Thank you!

At American Adventure Lab, we strive to improve anywhere we can. If you experience any issues with this product or have any suggestions, please let us know.

If you have any questions or concerns, please don't hesitate to reach out to us at 385.202.4188 or via email at Sales@AmericanAdventureLab.com.

